

Potter Target Firearms - Rink Grip Order Form

Please scan and email or fax back the last two pages of this document with the information required to complete your order. If any information is missing or options not indicated, the order for your grip will not be processed.

The following is a description of the options available for ordering a customised Rink Grip.

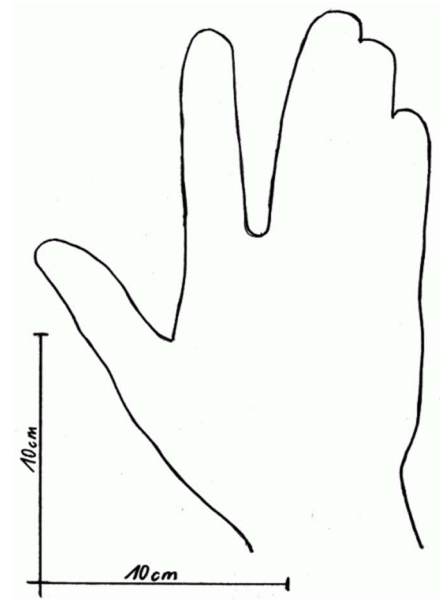
Size

Place your shooting hand on the last page of this order form as shown in this sketch.

Separate your thumb and trigger finger but keep the remaining fingers together.

Draw a line around the contour of your hand with a thin ballpoint pen.

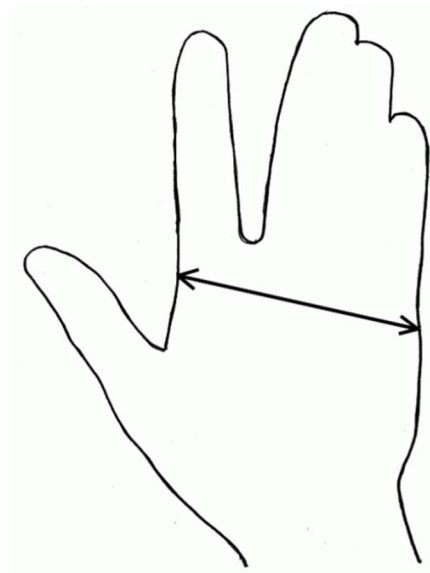
Draw a horizontal and vertical reference line on the sheet, each 10cm long. This allows us to ascertain possible distortions during transmission by fax or scanner.



To get an estimate of size, measure your hand width across the knuckles, without the thumb.

XXS* for 75mm
XS* for 80mm
S for 85mm
M for 90mm
L for 95mm
XL* for 100mm
XXL* for larger than 105mm

Note : * = not available for every pistol



Side (Handedness)

All grips are available for right or left handed shooters. (without extra charge)

Form



Convex
for a "normal" men's hand



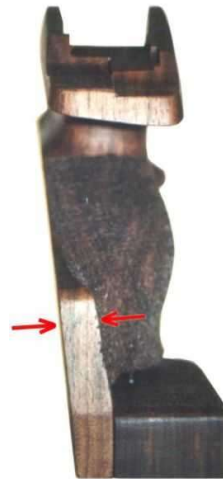
Flat
for short or big hand

Angle

The lateral grip angle of the 0 degree version of our grips is calculated so that the shooter grips more behind the pistol, with barrel axis and forearm forming a line.



0 Degree



7 Degree

Lateral Turning

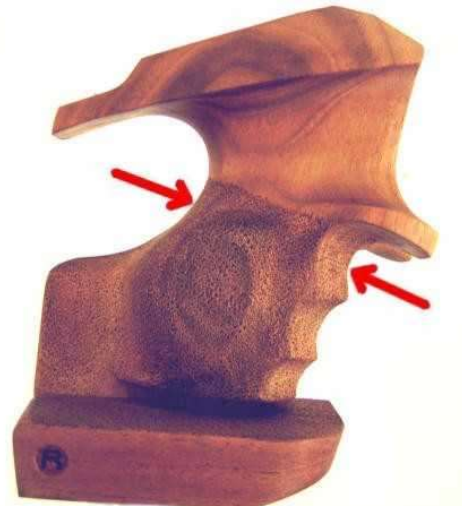
A lateral grip angle of 7 degrees is for right-handed shooters aiming with the left eye. All grips are available in a version turned 7° around the grip axis towards the trigger finger. This turning may also be beneficial for shooters with short fingers.

Volume

For shooters with long hands, our grips are also available with a thicker volume. With this extra volume, the hand is 5 millimetres further back so your fingers do not wrap around the grip too far and your trigger finger doesn't reach too far into the trigger area.



Normal



Thick

Timber

Walnut is the traditional wood for grip fabrication. Due to its special nature, not tearing, no deforming, it makes a fine shaft wood. We use European walnut. This natural resource may vary in brightness or texture.

Our **Laminated** wood is made up of solid-colored veneers, which are bonded to the adequate width. Even after grip adjustments, the color stays true. The color combination is "blue-orange-brown".



Walnut



Laminate

Both wood materials have similar properties. Laminated wood is approx. 20 % heavier. Apart from that, the difference is purely esthetic. **Note : \$30 extra for Laminate grips.**

Potter Target Firearms Rink Grip Order Form

Office Use:	Invoice No:
	Paid: / /
	Ordered: / /

Fax the completed order form (2 pages) to
Potter Target Firearms on 02 6013 9239
or scan and email to:
potfire@icloud.com

Date _____

Customer Name _____

Address _____

Postcode _____

Contact Number _____

Email _____

Make of Pistol _____

Model _____

Notes _____

Please note any Sight extensions (eg Morini 162 compact with rear sight extension) or anything else that may influence the fitting of the grip.
Grips for Walther GSP and FWB AW93 pistols – please include Serial No as older model frames will differ.
If there are any other modifications or variations, take a photo of the pistol frame and its existing grip and include it with the email. Please contact Potters if you are unsure of anything so that we can help get the best grip to suit your needs.

Please circle the required options below.

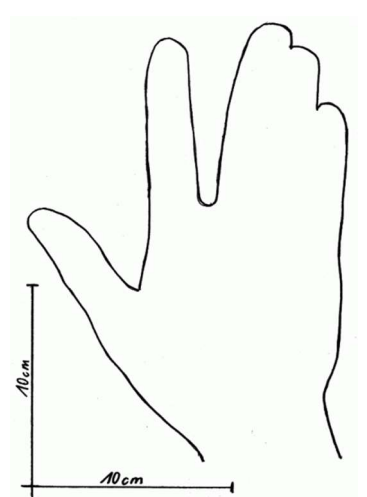
Size	XXS	XS	S	M	L	XL	XXL
Side (Handedness)	Righthand		Lefthand				
Form	Convex		Flat				
Angle	0 degree		7 degree				
Volume	Normal		Thick				
Timber	Walnut		Laminate (\$30 extra)				

On the next page, place your shooting hand on a sheet of paper as shown in this sketch.

Separate your thumb and trigger finger but keep the remaining fingers together.

Draw a line around the contour of your hand with a ballpoint pen keeping the tip of the pen angled in very slightly so as to draw an accurate outline of your hand.

Draw a horizontal and vertical reference line on the sheet, each 10cm long. This lets us check for any possible distortions when sent by fax or scanner.



Customer Name _____

Pistol Make & Model _____

As described on the previous page, trace the outline of your hand and indicate clearly on each of the horizontal and vertical reference lines, a section that is 10cm long. (Note : The printed dashed lines are not to scale, you must **clearly mark the start and end of a 10cm section on both lines.**)



As the Rink Grips are designed to suit a particular make and model of pistol, and are custom made according to the options I have indicated above, I (the customer) accept that this item is non-refundable except in the case of faulty materials or flaws in the manufacturing process.

Signed: _____ Date: _____